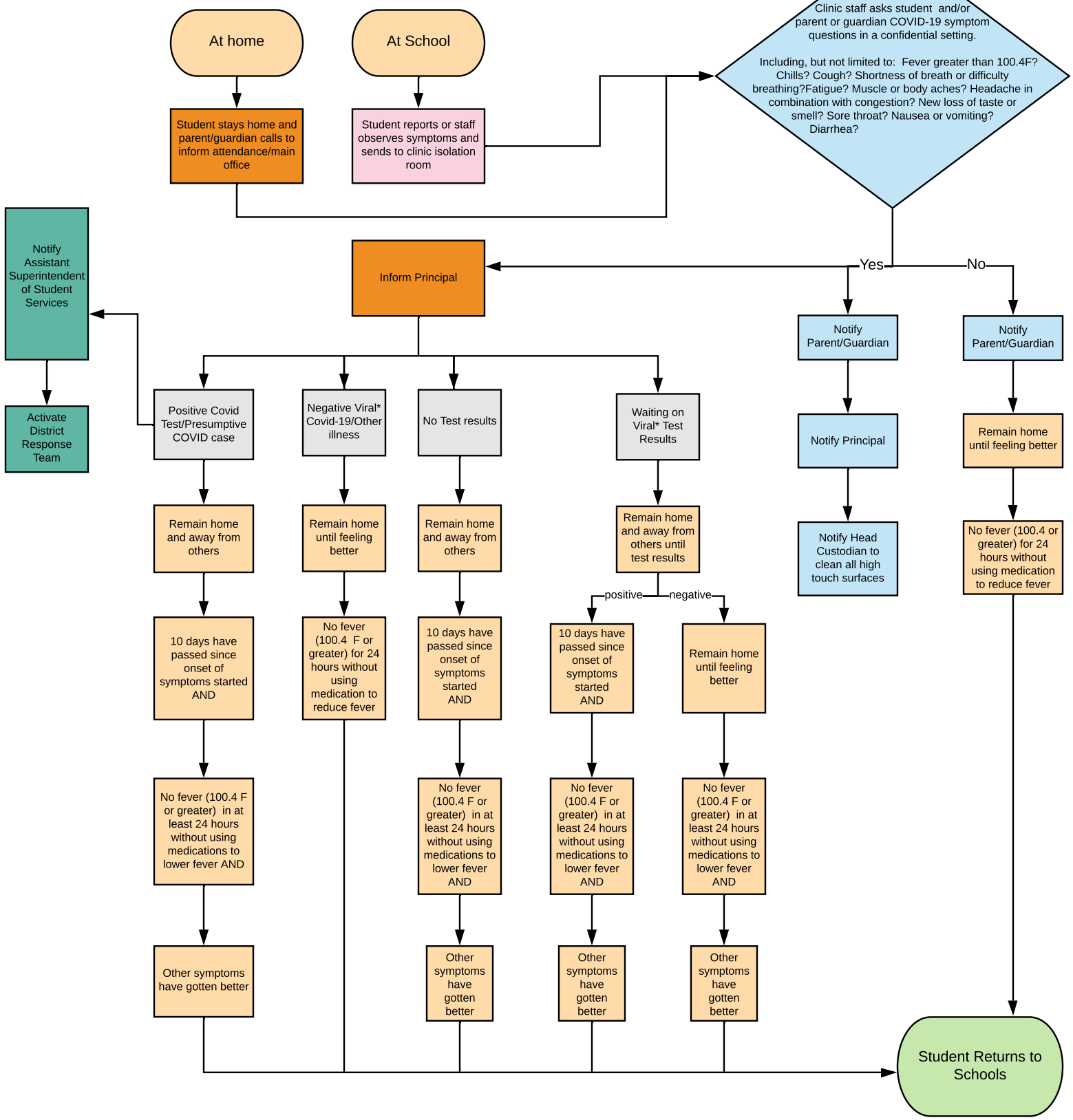




Student Feels Sick

Covid-19 Response Protocols



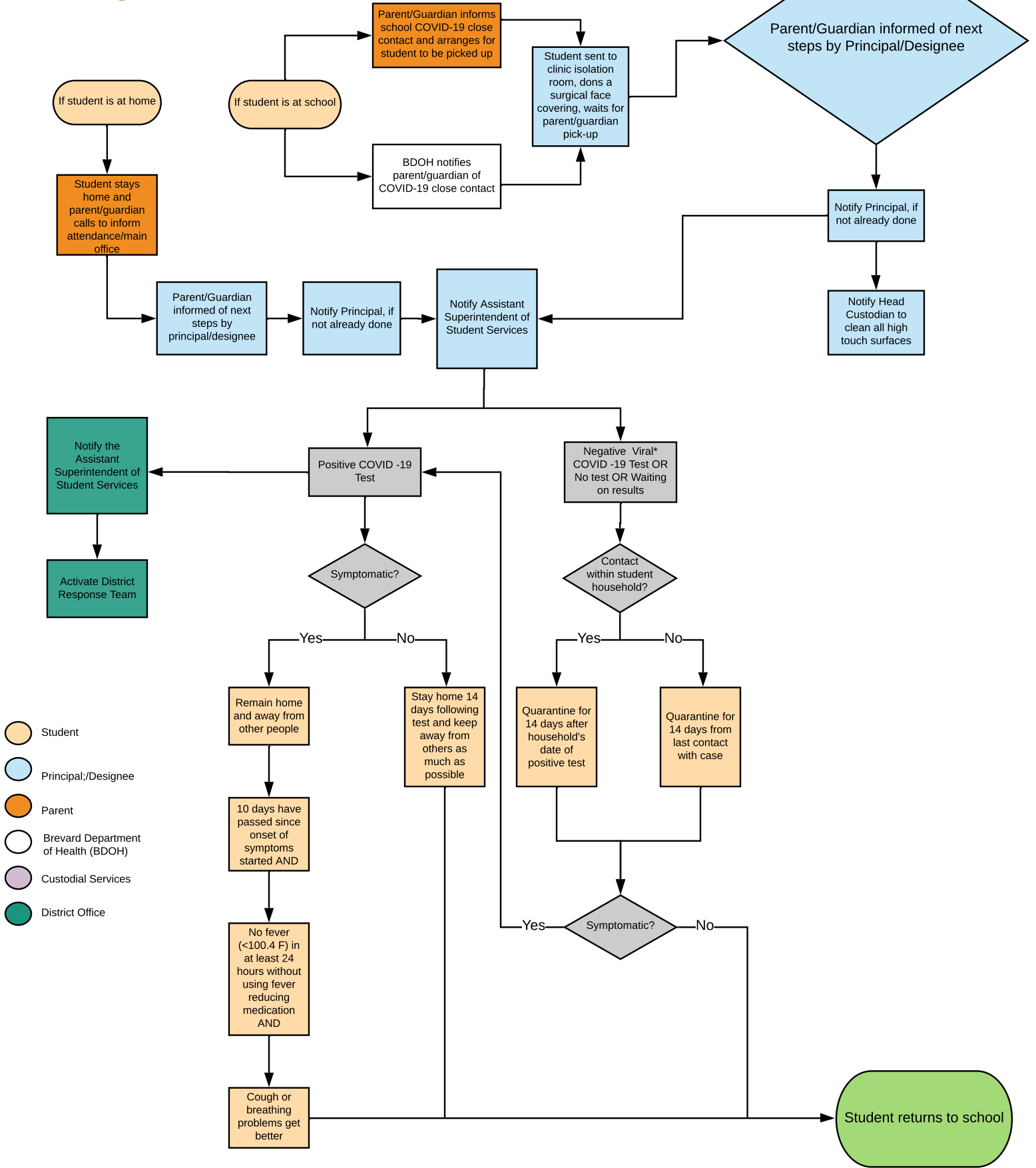
- Student
- Teacher
- Principal/Designee
- Custodial Services
- Parent/Guardian
- District Office

* For purposes of a negative result, a rapid test is not appropriate
 **Flowchart cannot account for all potential situations. BPS and Brevard DOH will consult, as needed, for cases not readily determined by this flowchart.
 ***Flowchart is subject to change based on guidance from CDC and FDOH.



STUDENT CLOSE CONTACT WITH CONFIRMED COVID-19 INDIVIDUAL

COVID-19 RESPONSE PROTOCOLS



- Student
- Principal/Designee
- Parent
- Brevard Department of Health (BDOH)
- Custodial Services
- District Office

* For purposes of a negative result, a rapid test is not appropriate

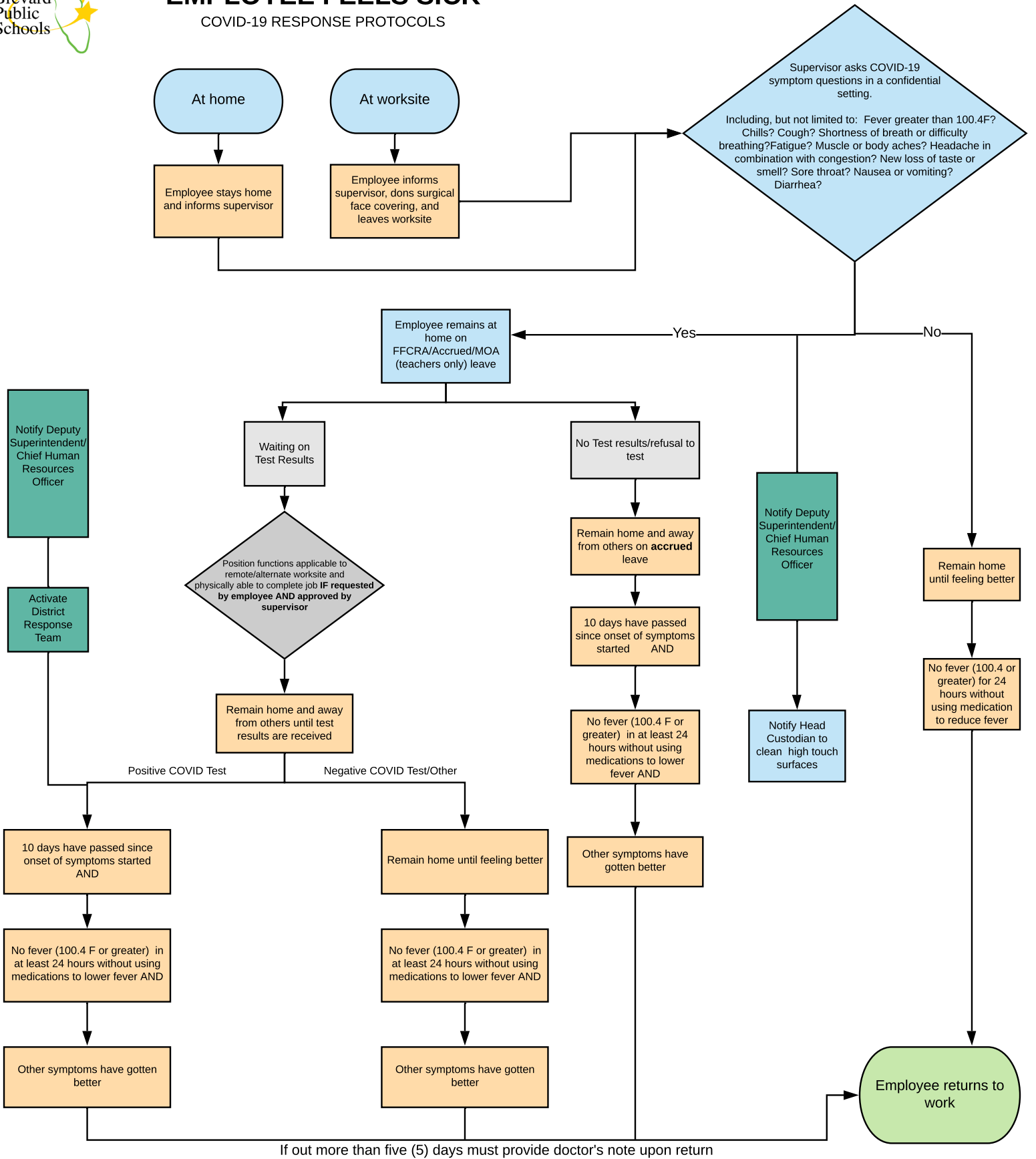
**Flowchart cannot account for all potential situations. BPS and Brevard DOH will consult, as needed, for cases not readily determined by this flowchart.

***Flowchart is subject to change based on guidance from CDC and FDOH.



EMPLOYEE FEELS SICK

COVID-19 RESPONSE PROTOCOLS



- Employee
- Custodial Services
- Supervisor
- District Office

* For purposes of a negative result, a rapid test is not appropriate

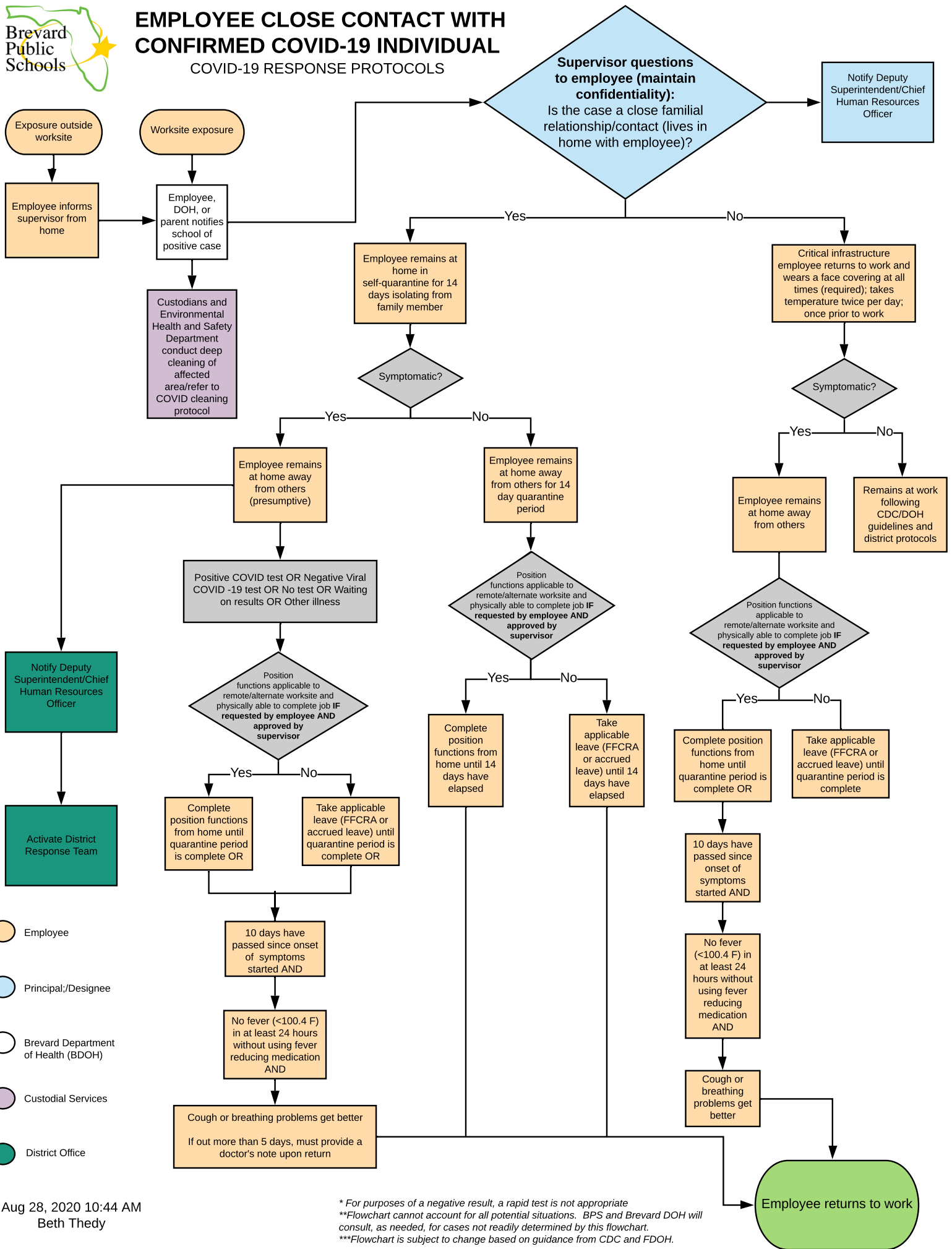
**Flowchart cannot account for all potential situations. BPS and Brevard DOH will consult, as needed, for cases not readily determined by this flowchart.

***Flowchart is subject to change based on guidance from CDC and FDOH. Aug 28, 2020 10:44 AM Beth Theby



EMPLOYEE CLOSE CONTACT WITH CONFIRMED COVID-19 INDIVIDUAL

COVID-19 RESPONSE PROTOCOLS



- Employee
- Principal;/Designee
- Brevard Department of Health (BDOH)
- Custodial Services
- District Office

* For purposes of a negative result, a rapid test is not appropriate
 **Flowchart cannot account for all potential situations. BPS and Brevard DOH will consult, as needed, for cases not readily determined by this flowchart.
 ***Flowchart is subject to change based on guidance from CDC and FDOH.