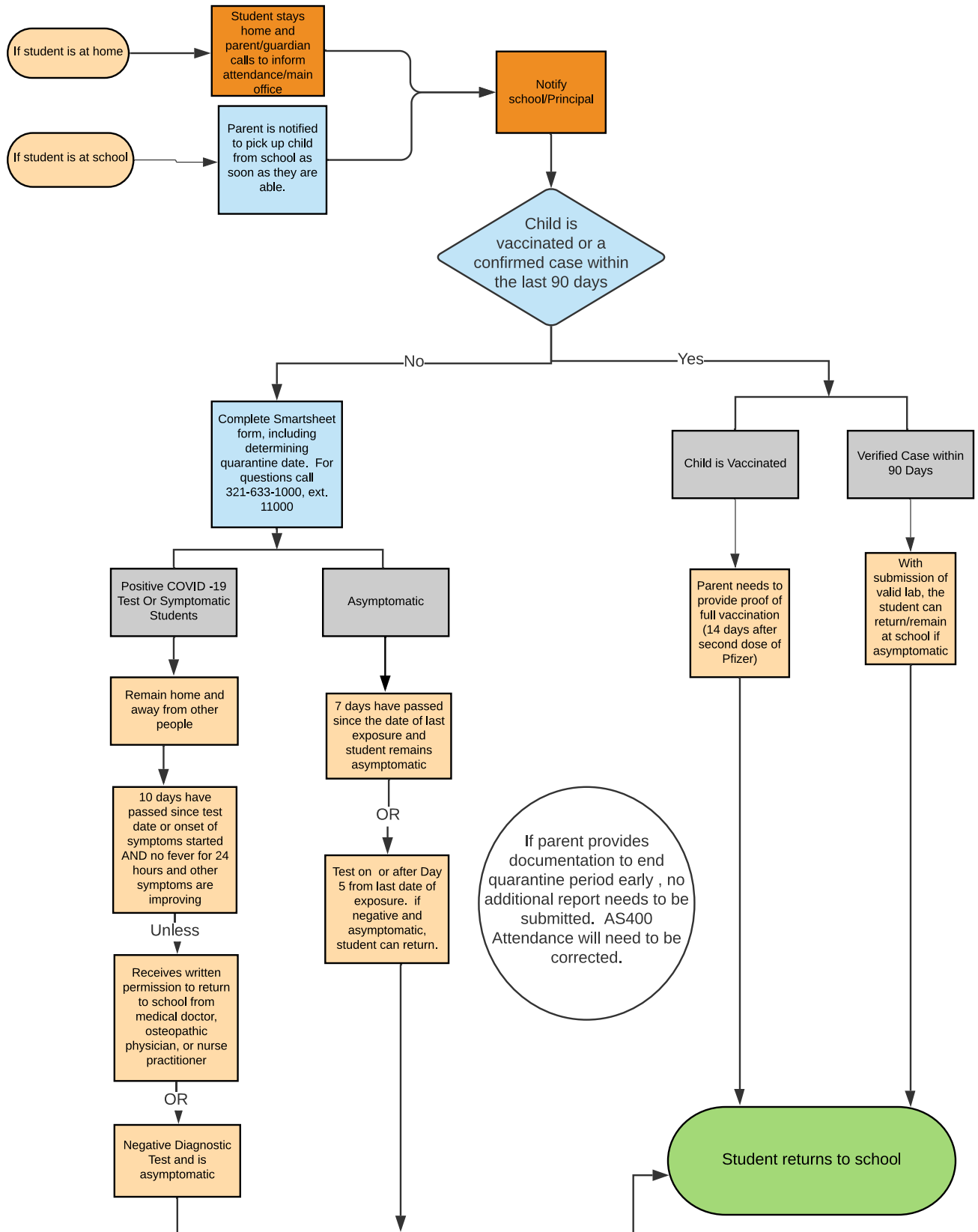




STUDENT CLOSE CONTACT WITH CONFIRMED COVID-19 INDIVIDUAL and/or POSITIVE CASE

COVID-19 RESPONSE PROTOCOLS



If parent provides documentation to end quarantine period early, no additional report needs to be submitted. AS400 Attendance will need to be corrected.

Aug 12, 2021 7:52 AM

**Flowchart cannot account for all potential situations. BPS and Brevard DOH will consult, as needed, for cases not readily determined by this flowchart.

***Flowchart is subject to change based on guidance from CDC and FDOH.