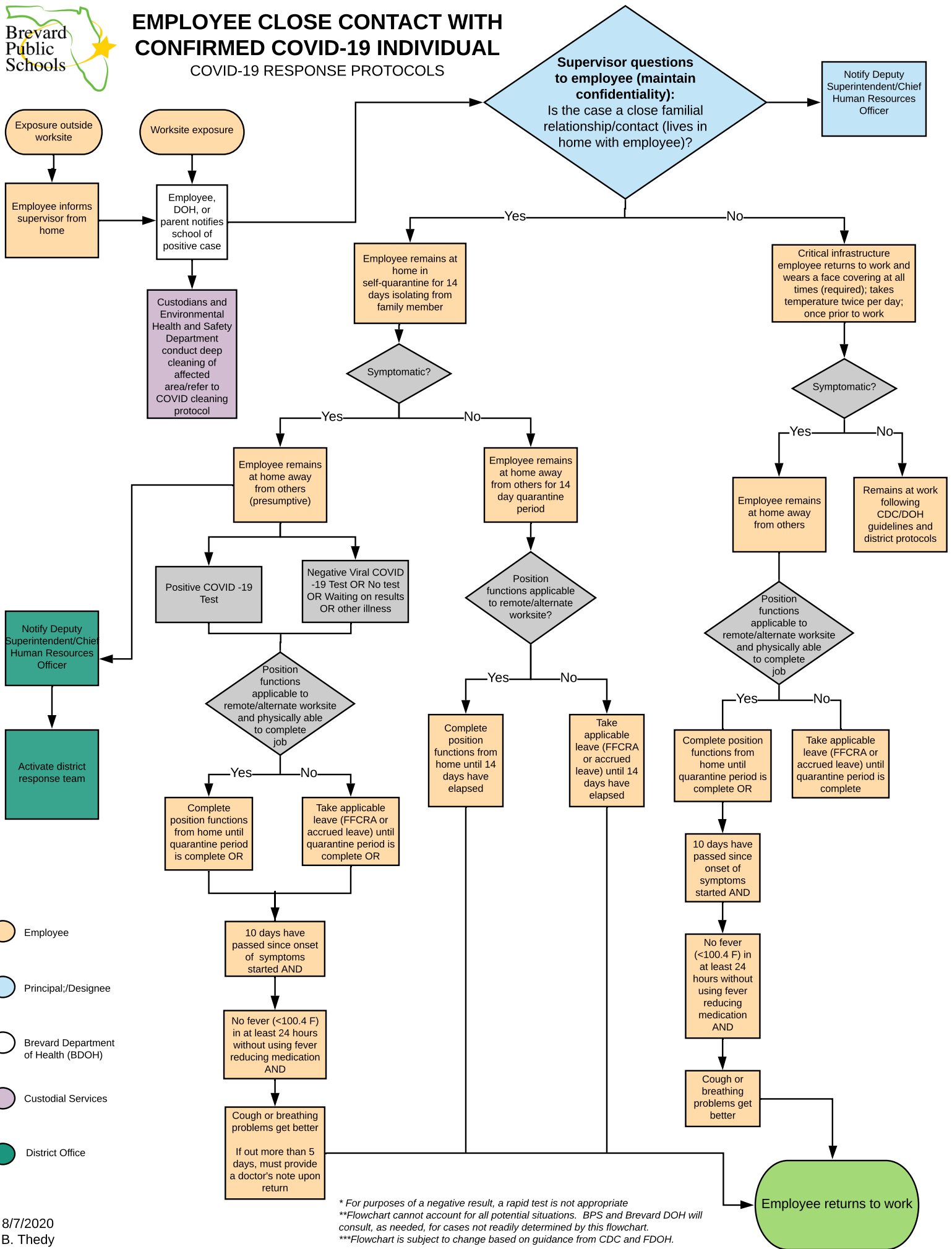




# EMPLOYEE CLOSE CONTACT WITH CONFIRMED COVID-19 INDIVIDUAL

## COVID-19 RESPONSE PROTOCOLS



- Employee
- Principal;/Designee
- Brevard Department of Health (BDOH)
- Custodial Services
- District Office

\* For purposes of a negative result, a rapid test is not appropriate  
 \*\*Flowchart cannot account for all potential situations. BPS and Brevard DOH will consult, as needed, for cases not readily determined by this flowchart.  
 \*\*\*Flowchart is subject to change based on guidance from CDC and FDOH.