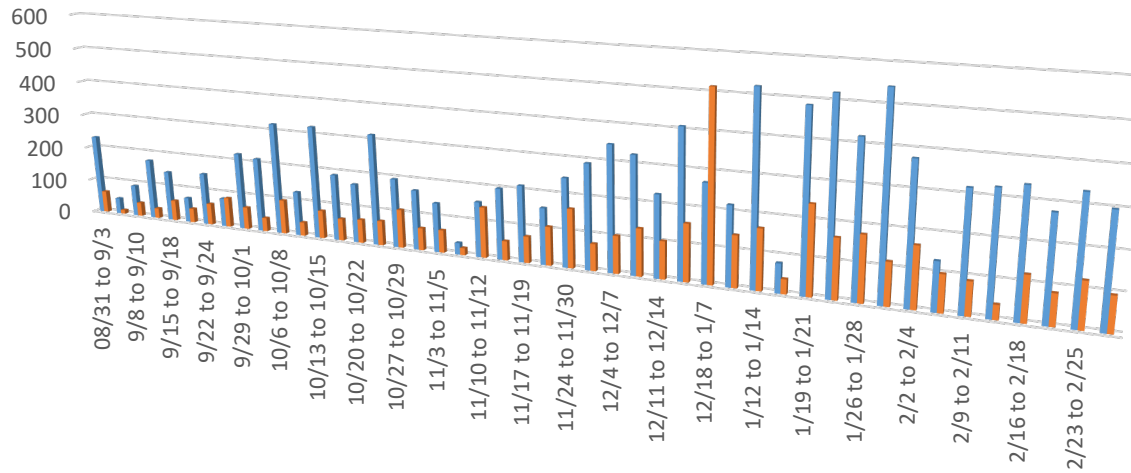


### Quarantine Trends 8/31/20 to 3/1/21



Week	08/31 to 9/3	9/8 to 9/10	9/15 to 9/18	9/22 to 9/24	9/29 to 10/1	10/6 to 10/8	10/13 to 10/15	10/20 to 10/22	10/27 to 10/29	11/3 to 11/5	11/10 to 11/12	11/17 to 11/19	11/24 to 11/30	12/4 to 12/7	12/11 to 12/14	12/18 to 1/7	1/12 to 1/14	1/19 to 1/21	1/26 to 1/28	2/2 to 2/4	2/9 to 2/11	2/16 to 2/18	2/23 to 2/25																	
CTC Quarantine - School	231	46	91	117	145	215	183	222	132	202	232	218	289	168	115	169	333	154	92	113	244	209	343	224	409	270	182	304	86	201	194	371	331	182	337	83	298			
CTC Quarantine - External (Household, Community)	63	11	40	29	59	41	62	86	64	39	98	39	80	63	67	70	105	36	42	14	54	74	108	64	75	104	310	45	81	154	166	40	263	178	166	510	39	228	42	395

■ CTC Quarantine - School      ■ CTC Quarantine - External (Household, Community)

*\*Contact to Case (CTC) means an individual was within 6 feet for longer than 15 minutes of a reported positive case. These individuals are asked to quarantine and monitor for any potential symptoms.*