

# MORGAN'S PLACE

FOR CHILDREN WITH SPECIAL-NEEDS



## NOW TAKING APPOINTMENTS!

PRIVATE SESSIONS \* GROUP SESSIONS  
FIELD TRIPS \* BIRTHDAY PARTIES  
SPECIAL EVENTS \* SEMINARS

The M.O.R.G.A.N. Project has created a new therapeutic/recreational option for families in Brevard and surrounding counties that focuses directly on the sensory functions of their child with special health care needs - designed just for children with physical disabilities and/or sensory processing disorders. Furnished with all the items necessary for inclusive therapeutic play and sensory stimulation. Morgan's Place is home to our unique, state-of-the-art Sensorium, Soft Play Vestibular Room, Technology Zone and iAccessibility Corner. Based on Snoezelen principals and multi-sensory environment protocols, it is completely wheelchair accessible and 100% wirelessly controlled.

### SENSORIUM:

Our Snoezelen-based multi-sensory environment has been engineered to bring together state-of-the-art equipment to stimulate the sensory pathways of touch, taste, sight, sound, smell and movement without the need for intellectual reasoning, and is beneficial for therapeutic play and/or relaxation.

### TECHNOLOGY ZONE:

Our interactive and accessible technology lab has Smart Touch features and specialized software, allowing children of all abilities to utilize our computers, iPads and video gaming system with or without the use of speech augmentative communication devices.

### SOFT PLAY VESTIBULAR ROOM:

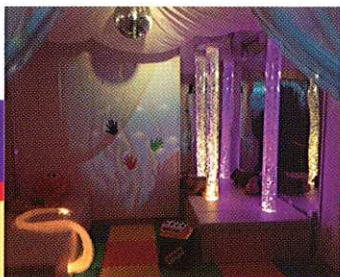
Created to allow the able-bodied children with sensory issues to be as creative and boundless as possible, utilizing an overhead swing system, soft-play furniture and toys, as well as music and lights to experience their senses in a recreational way.

### OUTDOOR SENSORIUM @ MORGAN'S PLACE

Inspired by the success of our indoor Sensorium we have taken the sensory experience outdoors! Our new outdoor Sensorium includes a Sensory Garden and Interactive Sensory Stations adjacent to our facility, including areas for water and sand play, a large gazebo with butterfly enclosure, with various activities that stimulate the senses of sight, sound, smell, touch, taste and movement - as well as a wheelchair accessible swing area.

COME HAVE FUN WITH US AT...

\* BY APPOINTMENT ONLY!



4241 N. Highway 1 • Melbourne, FL 32935  
321-506-2707

[www.themorganproject.org](http://www.themorganproject.org)

[info@themorganproject.org](mailto:info@themorganproject.org)