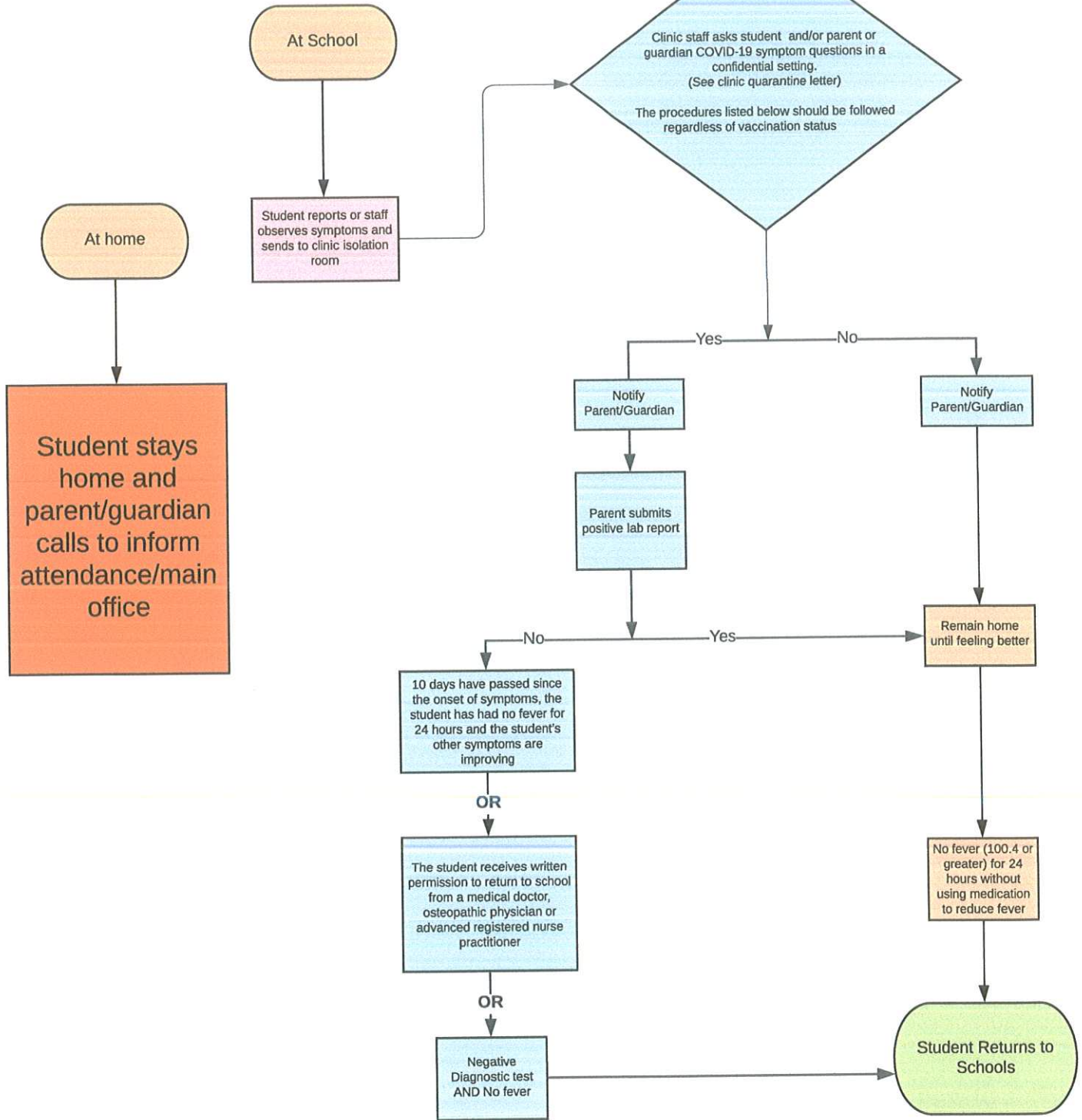




Student Feels Sick

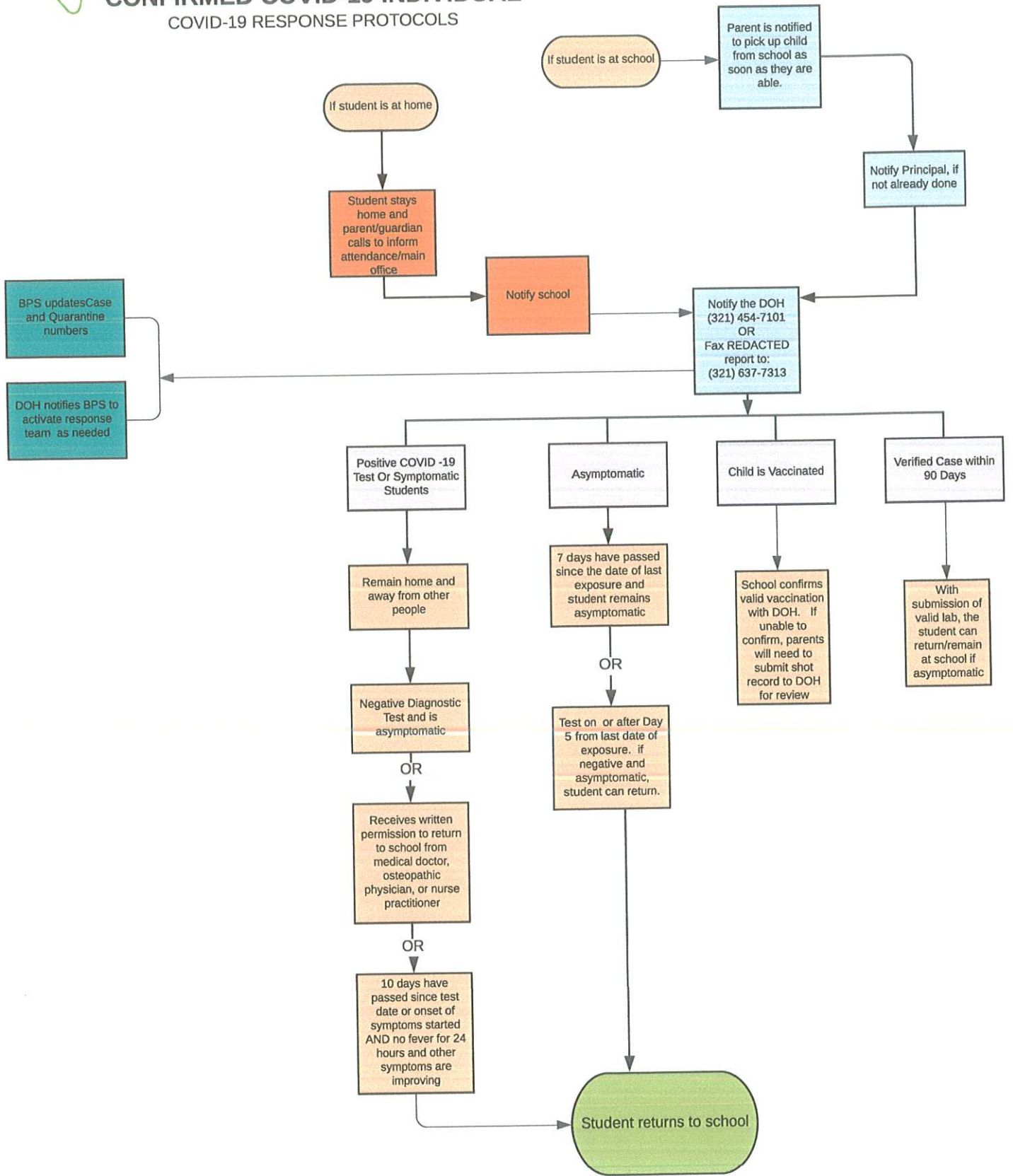
Covid-19 Response Protocols





STUDENT CLOSE CONTACT WITH CONFIRMED COVID-19 INDIVIDUAL

COVID-19 RESPONSE PROTOCOLS



BPS updates Case and Quarantine numbers

DOH notifies BPS to activate response team as needed

**Flowchart cannot account for all potential situations. BPS and Brevard DOH will consult, as needed, for cases not readily determined by this flowchart.

***Flowchart is subject to change based on guidance from CDC and FDOH.