



2024-2025 EFSC/BPS Early College Program Getting Started


1. Attend the EFSC/BPS Early College Program Information Session

- ✓ Congratulations! You have been invited to consider participating in the Early College Program based on your 2023 Cumulative GPA of 3.0 or higher. An informational meeting will take place on January 24, 2024, 6 PM in the MIHS Auditorium.

2. Declare Student Interest by signing up to take the PERT at Merritt Island High School

- ✓ If you are interested in participating in the Early College Program, scan the QR code to sign up for the PERT by **February 5, 2024**. Space is limited.

3. Complete Your EFSC Online Application

- ✓ Apply for admission to EFSC. You will need to know your Social Security Number (SSN) and your state unweighted high school GPA. Early College students should select AA for Program of Study.
- ✓ Go to the EFSC webpage at www.easternflorida.edu and click the  button.
- ✓ When you receive your EFSC acceptance letter, **complete the online Dual Enrollment Orientation AND the initial advising appointment with your EFSC advisor.**

4. Take the PERT at your school or EFSC. (Only 9th graders may take the PERT at MIHS)

- ✓ Score college-ready in reading and writing for acceptance into the Early College Program (PERT, PSAT, SAT, ACCUPLACER, ACT, CLT).
- ✓ If you qualify, your school will give you a notification letter with information about how to preregister for the **mandatory in-person Early College Orientation for you and your parent/guardian**. Parents must attend with student. This is in addition to the online dual enrollment orientation done after applying.
- ✓ If you do not score college-ready in Reading and/or Writing on the PERT, your school will give a notification letter with information about how to schedule a retest at an EFSC campus. **You must wait 30 days to retest.**

5. Turn in the Early College Program Student/Parent Agreement by your school's deadline of 1 week after receiving.

- ✓ This will be provided to the student upon earning qualifying PERT test scores.

6. Complete all Early College Program requirements by Wednesday, May 1, 2024

- ✓ This includes applying to EFSC, completing the online and in-person orientations, obtaining college ready test scores, submitting the Student/Parent Agreement, and completing the initial advising appointment with your EFSC advisor.

7. Meet with your High School Counselor to complete the EFSC Dual Enrollment Registration Form

- ✓ Current 10th graders that qualify for the Early College 2-year program will take 2 classes in the summer and 3 in the fall.
- ✓ Current 9th graders that qualify for the Early College 3-year program will take 2 classes in the fall. We do not recommend current 9th graders take classes this first summer. Speak to Mrs. Ash for more details.
- ✓ Mrs. Ash will meet with all qualifying students as a group and walk them through the registration process. Do not make an appointment with her to register for classes, she will contact you.
- ✓ Check your EFSC student Titan email for information about the status of your registration.



Eastern Florida
STATE COLLEGE



Declare your Interest and Sign up for the PERT



Early College Program

**A Dual Enrollment Opportunity for
Motivated High School Students!**



What is Dual Enrollment?



**High school
students earn
high school and
college credit
at the same time.**

Part-Time

Up to 3 EFSC classes
per term and
1 summer class

Early College

Up to 3 classes per term
and 2 summer classes.
Associate Degree Track.
Bus available for 10th
graders

Dual Enrollment Options

Early Admission

Fall and Spring semester of
12th grade on EFSC
campus

Full-Time

Spring semester of 12th
grade on EFSC campus

Dual Enrollment Course Weight

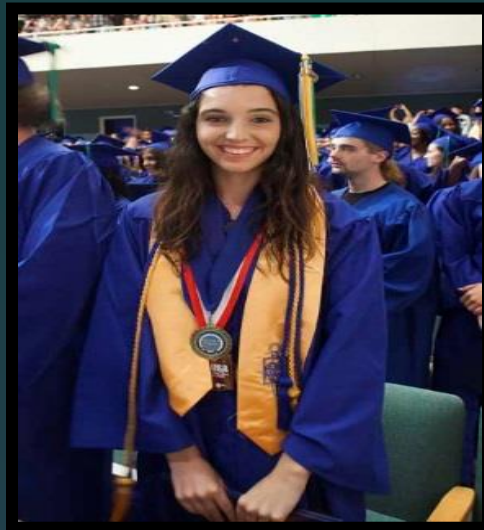
Dual Enrollment courses are weighted the same as *AP*, *IB*, and *AICE*:

- ▶ When your high school calculates your overall weighted high school GPA
- ▶ When state universities calculate your high school GPA in the core academic classes for university admission decisions

Early College Program

***A partnership initiative between the Brevard
Public School District and EFSC***

Developed for students whose goal is to graduate from
high school with an Associate in Arts (A.A.) or
Associate in Science (A.S.) degree



Benefits of Early College Program

The Early College Program enables students to:

- Complete two years of college with no tuition, textbook costs, or lab fees
- Get used to college expectations while still in high school
- Use their college courses to explore career interests and identify possible majors
- Earn an Associate degree along with their high school diploma

Associate in Arts Degree

- Two-year degree for students whose goal is a bachelor's degree or higher at a university
- Equivalent to freshman and sophomore years at a state university
- Combination of academic and elective courses chosen to meet selected university major prerequisites
- Total of 20 college courses equaling at least 60 credit hours
- Students graduating with an AA enjoy first-time-in-college (FTIC) benefits at state universities

Associate in Science Degree

- Two-year career education degree to prepare students for direct entry into the workforce
- Combination of general education core courses, major courses, and technical electives
- Typically, a total of 20 college courses equaling at least 60 credit hours
- Students graduating with an A.S. degree can articulate their degree into a Bachelor's degree

Early College Program Expectations

Participants are expected to:

1. Complete selected EFSC and high school classes each year.
2. Maintain program eligibility.
3. Successfully complete associate degree general education requirements.
4. Finish prerequisite requirements for selected university major or A.S. program major and technical electives.
5. Remain on track for an associate degree by high school graduation.

Three-Year Track*

10th Grade12 credit hours

Fall 2 EFSC classes

Spring 2 EFSC classes

11th Grade24 credit hours

Summer 2 EFSC classes

Fall 3 EFSC classes

Spring 3 EFSC classes

12th Grade24 credit hours

Summer 2 EFSC classes

Fall 3 EFSC classes

Spring 3 EFSC classes

*College credit from AP, AICE, or IB exams may be used to meet degree requirements

Two-Year Track*

11th Grade.....24 credit hours

Summer 2 EFSC classes

Fall 3 EFSC classes

Spring 3 EFSC classes

12th Grade Early Admission.....36 credit hours

Summer 2 EFSC classes

Fall 5 EFSC classes

Spring 5 EFSC classes

*College credit from AP, AICE, or IB exams may be used to meet degree requirements



Admission Requirements

1. State *cumulative* unweighted high school GPA of 3.0 or higher.
2. College-ready Reading and Writing scores on a college placement test (i.e. PERT, SAT, ACT, PSAT or ACCUPLACER).
3. High school record of good attendance and responsible behavior.
4. Meet all program deadlines and requirements.
5. Completion of EFSC Dual Enrollment Online Orientation and mandatory In-Person Early College Orientation.
6. Completion of Algebra 1 by the end of 9th grade (Two-Year Track) or completion of Geometry by the end of 10th grade (Three-Year Track).

EFSC Class Times

10th grade students

- EFSC classes meet 10:50 AM – 12:05 PM
- 1 EFSC class M/W; 1 EFSC class T/Th
- High school periods 3 and 4 at EFSC
- Friday: No EFSC classes – Periods 3 and 4 at the high school for study, community service, and enrichment

11th and 12th grade students

- EFSC classes meet at the beginning and/or end of school day or in the evening
- Face-to-face, online, or hybrid
- Friday attendance at the high school is NOT required during EFSC class periods



Bus Transportation

- ▶ Guaranteed for 10th graders in the three-year track during designated Early College class periods
- ▶ 11th and 12th graders may ride bus if space is available
- ▶ Not provided on BPS school holidays (i.e. President's Day)
- ▶ 11th and 12th graders responsible for their transportation to and from EFSC



Required Minimum Entry Scores

- ▶ Students must meet the minimum college-ready test scores in Reading and Writing for placement into ENC 1101- Composition 1.
- ▶ Students must meet the minimum college-ready mathematics test score for College Algebra or Topics in Math by the beginning of their senior year.
- ▶ View the placement requirements at:



<https://www.easternflorida.edu/testing/placement-testing/assessment-scores.php>

EFSC Placement Testing on the High School Campus

- ▶ EFSC will offer the PERT on the high school campus
- ▶ Students will receive their score report the day of testing



Testing Anxiety?? Get prepared!!!

1. Google *PERT Study Guide*; take *PERT Practice Tests*.
2. Take the PERT at your school.
3. Retest on PERT or ACCUPLACER 30 days after original test date.
4. Go to RegisterBlast on EFSC website to schedule a PERT retest.
5. Go to Placement Testing Services on EFSC website to schedule a remote ACCUPLACER retest.

Requirements to STAY in the Early College Program

- ❑ “C” or higher in courses requiring writing skills and math competencies
- ❑ State cumulative unweighted high school GPA of 3.0 or higher
- ❑ College GPA of at least 2.0 each term
- ❑ On track to receive diploma and Associate degree at graduation
- ❑ Qualify for MAC 1105 or MGF 1106 by the fall term of 12th grade

Estimated Cost of Attendance

2023-24 Academic Year

UF Undergraduate

Tuition/Fees	\$6,380
Books, Supplies, Equipment	1,450
Living Expenses	11,500
Transportation	1,570
Misc. Personal Expenses	2,194
TOTAL BUDGET	\$23,094

Source: www.sfa.ufl.edu/cost/

How will EFSC staff help you chart your pathway?

EFSC High School Outreach Advisors help students:

- ▶ Plan their degree program
- ▶ Register for classes
- ▶ Use “myGPS” to track courses toward their degree program
- ▶ Access academic support services



EFSC offers:

- ▶ Career Services to help students identify career interests and skills
- ▶ Elective courses, such as *Discover Your Major and Career and Success Strategies College & Life (SLS)*
- ▶ Seminars and clubs in selected career fields

Factors to Consider

- ❑ Additional study expectations required with college coursework
- ❑ Courses designed for adults – **NO** modifications made to accommodate age and maturity level
- ❑ EFSC grades stay on permanent college **and** high school transcript
- ❑ Poor grades can impact scholarships, financial aid, and university admission

Factors to Consider

- ❑ Summer classes may be needed to earn degree by graduation
- ❑ Balancing college, high school, and extracurricular demands is necessary
- ❑ Must meet high school and Associate degree requirements
- ❑ Arrange transportation on BPS school holidays and for classes taken outside of the Early College designated periods

Considerations for Parents

- ❖ High school counselor is point of contact for parents seeking information about student
- ❖ Parents may not contact college instructors for student information (FERPA)
- ❖ Family must follow both high school and EFSC calendars
- ❖ Student is responsible for purchasing required consumables (i.e. workbooks and lab manuals)
- ❖ The college does NOT have an excused absence policy; attendance requirements are specified in each course syllabus



Getting Started!

1. Submit *Student Interest Form* to the high school counselor **by the deadline.**
2. Take the PERT either at your school or EFSC and meet the minimum scores in Reading and Writing.
3. Submit the online EFSC Application for Admission.
4. Once you receive your acceptance letter with student ID, complete the online Dual Enrollment Orientation.
5. Schedule your Dual Enrollment Initial Advising appointment with your EFSC High School Outreach Advisor.
6. EFSC will request your high school transcript.

Then....



7. Turn in the Early College Program Student Performance Contract to your counselor **by your school's deadline.**
8. Attend ONE of four required in-person Early College Orientations.
9. Check your student Titan email for information about your registration status.
10. Follow your high school's directions to obtain your college textbooks!

Important Dates



- ▶ PERT administered at high school: **February 12, 2024**
- ▶ Early College Program Student Performance Contract deadline: **May 1, 2024**
- ▶ Summer Registration Window opens: **April 1, 2024**
- ▶ EFSC Fall Registration Window opens: **TBA**

Important Dates (continued)

▶ **Summer 2024 Terms**

- ▶ May 13 – August 2: Summer A (12-weeks)
- ▶ May 13 – June 21: Summer B (6-weeks)
- ▶ June 10 – August 2: Summer C (8-weeks)
- ▶ June 24 – August 2: Summer D (6-weeks)

▶ **Fall 2024 Term:** TBA

Important Dates (continued)

► Mandatory In-person Early College Orientation

Attend one of the following upon receiving college-ready test scores in reading and writing.

- Monday, March 18, 2024: Titusville High School Auditorium
- Wednesday, March 20, 2024: Merritt Island High School Auditorium
- Tuesday, April 2, 2024: Eau Gallie High School Auditorium
- Tuesday, April 9, 2024: Bayside High School Auditorium

Doors open at 5:45 PM for registration. Presentation begins at 6:30 PM.

Contact Information

Guidance: 321- 454-1000 Ext. 25262



EFSC Testing: Go to EFSC website: www.easternflorida.edu

Insert RegisterBlast in the search box to schedule your PERT testing appointment online.

Achieve the Early College Program Goals!

1. Complete the lower-level prerequisites for your major.
2. Graduate with your diploma and Associate degree.
3. Continue your education at a four-year university!



**In 2022-2023, 355 high school seniors
graduated with an Associate Degree!**