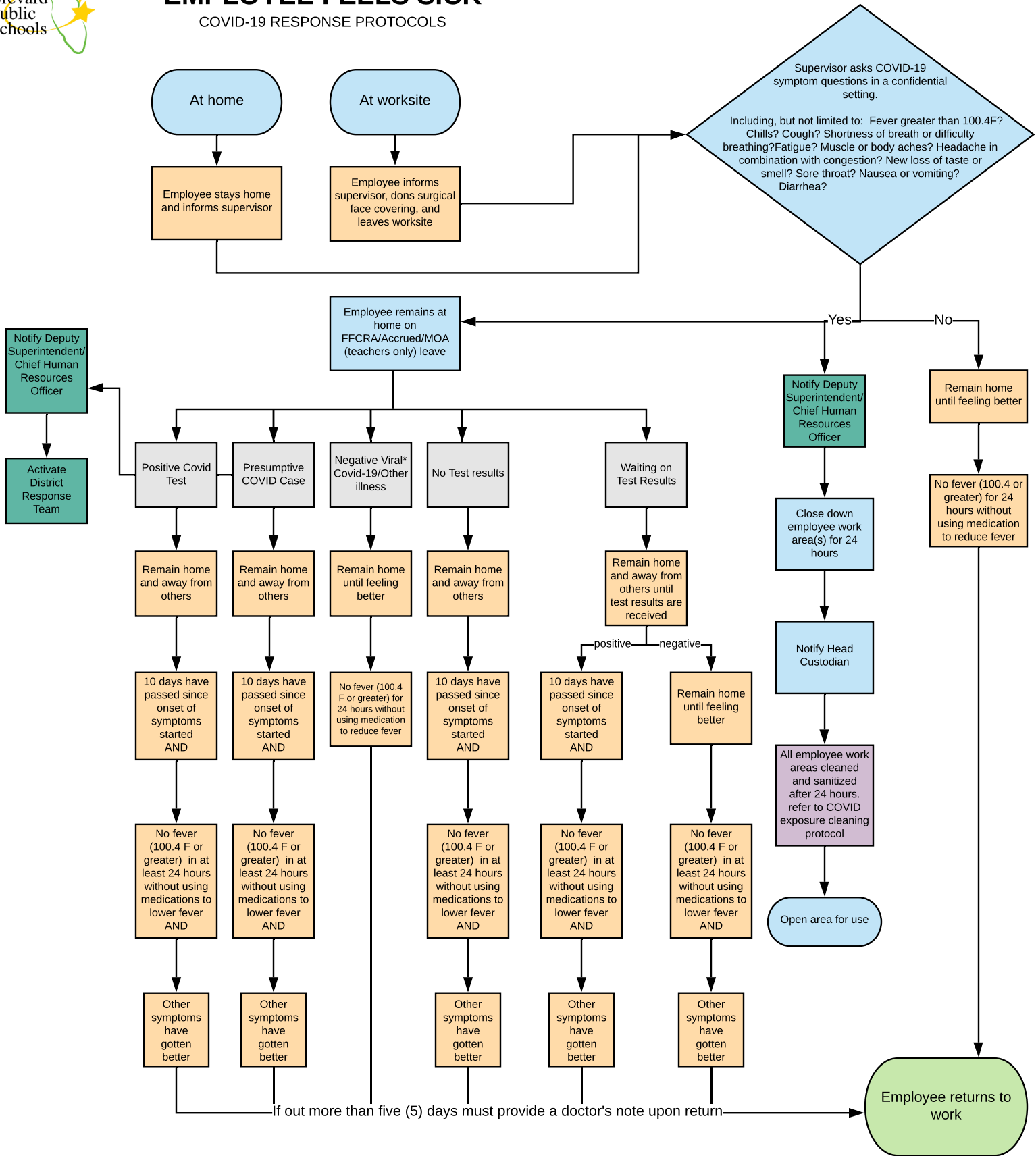




# EMPLOYEE FEELS SICK

## COVID-19 RESPONSE PROTOCOLS



- Employee
- Supervisor
- Custodial Services
- District Office

\* For purposes of a negative result, a rapid test is not appropriate

\*\*Flowchart cannot account for all potential situations. BPS and Brevard DOH will consult, as needed, for cases not readily determined by this flowchart.

\*\*\*Flowchart is subject to change based on guidance from CDC and FDOH.