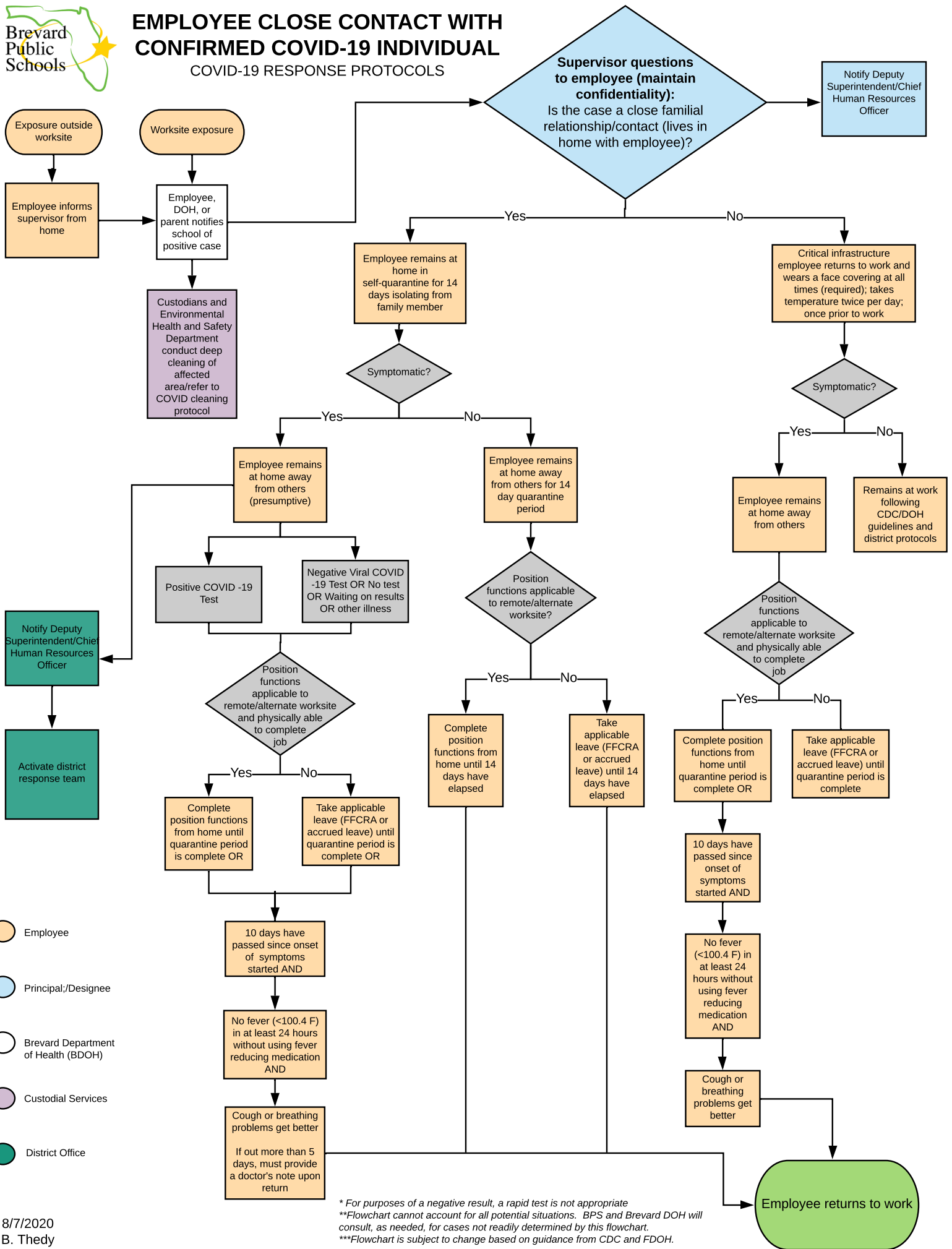




EMPLOYEE CLOSE CONTACT WITH CONFIRMED COVID-19 INDIVIDUAL

COVID-19 RESPONSE PROTOCOLS



- Employee
- Principal;/Designee
- Brevard Department of Health (BDOH)
- Custodial Services
- District Office

* For purposes of a negative result, a rapid test is not appropriate
 **Flowchart cannot account for all potential situations. BPS and Brevard DOH will consult, as needed, for cases not readily determined by this flowchart.
 ***Flowchart is subject to change based on guidance from CDC and FDOH.