



National Beta

New Member Handbook

Congratulations!

Welcome to National Beta!

You were chosen to be part of this exclusive organization because you have exhibited the qualities of academic achievement, character, leadership and service.

National Beta seeks to inspire young adults to lead by serving others. Between Junior Beta (grades 4-8) and Senior Beta (grades 9-12), the organization has empowered millions of students to make an impact on the world.

MISSION: To promote the ideals of academic achievement, character, service and leadership among elementary and secondary school students.

MOTTO: Let Us Lead By Serving Others



MY SCHOOL CLUB



Principal



Sponsor



Club Members



School Officers

STATE LEVEL



State Council



State Sponsor



School Clubs



State Officers

NATIONAL LEVEL



National Board



National Officials



State Clubs



National Officers

National Beta History

Junior Beta Pledge:

I hereby declare that I shall always strive to be honest and truthful at all times; to maintain a creditable scholastic record; to be of service to my teachers and fellowmen; to conduct myself in an ethical and moral manner to reflect credit upon my school and community.

Senior Beta Pledge:

I do solemnly declare that I shall always strive to hold fast to the principles of honesty; to endeavor constantly to maintain an admirable reputation; and to develop the foundation of character, service, and leadership in my life. I also pledge to cooperate with fellow members of The National Beta Club. I will encourage an individual responsibility to improve my school, community, state and nation. I will defend a high standard of morality and join with my club to contribute to the improvement of our entire student body.

CERTIFICATE: Your certificate signifies that you have met all requirements set forth by National Beta and is a symbol of your exemplary student effort and achievement. Your certificate should be proudly displayed.

MEMBERSHIP CARD: Your membership card signifies your commitment to achievement, character, leadership and service. Your membership number is used to identify your involvement with National Beta. The back of your card has your pledge so you'll always remember your promises to Beta. Your card should be held onto and cherished.

PIN: Wear your pin with pride as it signifies your membership within a group of distinguished individuals dedicated to developing into the leaders of tomorrow. Your pin may be worn at or during induction ceremonies, officer installation ceremonies, service projects, National Beta events and more.

Honesty

Knowing that honesty is necessary to the formation of good character, and that the principles of honesty dictate that I not only refrain from acts of dishonesty; but that I perform my duties fully and take advantage of the opportunities afforded me by my circumstances.

Justice

Believing that it is only right and proper that I should be just and fair in my dealings with my fellowman; that I should condemn no one without giving him a chance to defend himself; and that I should consider all factors before forming an opinion of another's motives, or before passing judgment upon his actions.

Service

Being convinced that the rendering of helpful service to my fellowman is a duty and privilege conferred upon me by my forebears and by my environment and that I can attain lasting satisfaction only by rendering such service to the best of my ability.

Cooperation

Knowing that I must work closely and in a friendly manner with others in this day of highly organized social and economic endeavor; and that I must respect authority and strive at all times to be dependable— if I am to be of greatest helpfulness to society.

Responsibility

Believing that full happiness is possible only through full acceptance of responsibility for my actions and for preserving and passing my rich inheritance on to coming generations.

Industriousness

Being aware of the fact that— if I am to be a factor for progress in my community and a real help to my associates — my mind must be alert to understand and my hands ready to perform promptly and fully the tasks that come my way.

Humility

Being convinced that humbleness of spirit is the only proper attitude for me to maintain in my relation with my associates, and that such spirit and attitude will make for my own peace of mind and for the well-being of those with whom I come in contact.

Charity

Knowing that if I am— tolerant in my appraisal of the ideas of others; generous in the use of my worldly assets; considerate of the rights of others; courteous in my actions toward all alike; gentle in my efforts to correct errors in others; kind in the exercise of my duties — I shall then be better able to contribute to the happiness of myself and others.

As a member of National Beta and as a citizen of my community, state, and nation I believe in and shall strive to promote the principles of:

NATIONAL BETA CREED

Achievement

Recognizing and honoring high academic achievement

WHAT IS YOUR FAVORITE CLASS?

WHAT IS YOUR FAVORITE WAY TO STUDY?

WHAT DO YOU DO TO MAKE SURE YOU MAINTAIN GOOD GRADES?

WHAT ARE YOU MOST PROUD OF?

WHAT SUBJECTS WOULD YOU LIKE TO LEARN MORE ABOUT?

WHY IS ACADEMIC ACHIEVEMENT IMPORTANT?

ways I can

inspire others:

- 1.
- 2.
- 3.
- 4.
- 5.

*connect
with others:*

- 1.
- 2.
- 3.
- 4.

encourage others:

- 1.
- 2.
- 3.

be generous:

- 1.
- 2.

help a fellow Beta:

- 1.

Preparing young people for life and empowering them to be successful

CHARACTER

Leadership

Developing the leaders of tomorrow

WHAT ARE QUALITIES OF A LEADER?

**WHO IS YOUR FAVORITE LEADER?
WHY?**

WHAT MAKES YOU A GOOD LEADER?

**WHAT IS SOMETHING YOU CAN DO
THIS YEAR TO BECOME A
BETTER LEADER?**

SERVICE

Demonstrating our motto: Let Us Lead by Serving Others

SEE

What are needs you see in your school and community?

SERVE

What are ways you can serve these needs?

STAY CONNECTED

Once you serve these needs, how can you stay connected and continue your impact?

How will you

Why is it important to be honest?

Name an example of a time you cooperated.

What do you do if you believe in something and someone else doesn't?

How are you responsible for your actions?



change the world?



Name a time you treated someone with respect when others were not.

What are your strengths?

Goals for myself this year:

Goals for my Beta Club:

National Beta Events

Check the events you are interested in!



STATE AND NATIONAL CONVENTION: Beta holds annual state conventions in 18 states, both for Senior and Junior Beta divisions, and winners of these state events go on to compete on a national level. Activities range from academic contests to quiz bowls to talent competitions. Conventions give members the opportunity to interact, share project ideas and showcase their academic and leadership abilities.

LEADERSHIP SUMMITS: Student Leadership Summits offer students a chance to learn how to become more effective leaders, build positive self-esteem and overcome negative peer pressure. Whether engaging in energetic group activities and discussions, listening to motivational speakers, watching inspirational videos or competing in team-building events, you'll develop enduring friendships and take home ideas that will enable you to become a better student, leader and person.

NATIONAL BETA LEADERSHIP CAMP AND CONFERENCE: Junior Camp is held during the summer in Greeneville, TN and Senior Conference is held in Washington DC. Beta Summer Leadership opportunities offer experiences that build confidence and character. Students will be motivated, inspired and form bonds with Beta members from across the nation. Both are designed to develop student-leaders, foster team-building, goal-setting, communication skills and more.

Talk to your sponsor to find out how you can get involved!

THE BETA SHOP

National Beta offers t-shirts,
trading pins, accessories, awards,
gifts and more.

Get Creative!

Draw your club t-shirt!



SHOP.BETACLUB.ORG



1934

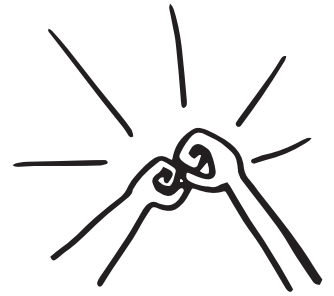
Let Us
Lead by
Serving others

LEADERSHIP

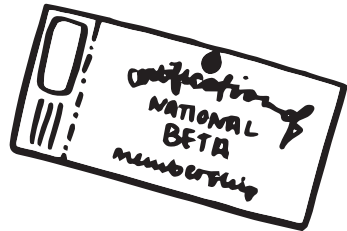
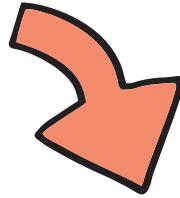
character

ACHIEVEMENT

service



Service
Projects



ALUMNI
association

1934 Society

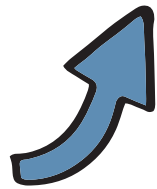


Scholarships

Beta Member \$1,000

congrats! National Beta

NATIONAL
convention

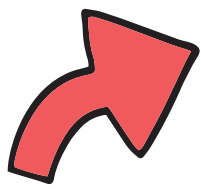


state

CONVENTION



RUN
for
OFFICE



Camp &
CONFERENCE



A large blue hexagonal area with 25 horizontal white lines for writing, set against a background of orange and yellow geometric shapes.

One year from now, come back to this page and review the letter to see how far you've come!

Follow Us

JOIN THE CONVERSATION

Follow us on social media to keep up-to-date with the latest National Beta activities.

FACEBOOK: NationalBetaClub

TWITTER: @NationalBeta

INSTAGRAM: @NationalBetaClub

YOUTUBE: BetaClubSpotlight

PINTEREST: BetaSponsors

SNAPCHAT: @NationalBeta

**NATIONAL BETA CLUB
151 BETA CLUB WAY
SPARTANBURG, SC 29306
1-800-845-8281
BETACLUB.ORG**