

Indialantic Elementary Safety & Security Updates

March 8, 2018

Presented By:

Ms. Braga

Mrs. Descovich

Deputy Doyle

Indialantic's Safety Committee

District Security

- ▶ Current threats: <http://www.wftv.com/news/9-investigates/9-investigates-school-officials-admit-failure-after-teacher-reported-potential-school-shooting-plot/712697110>
- ▶ The board/district initiatives approved last year:
 - ▶ Single Point of Entry
 - ▶ 6-foot fences
 - ▶ Security cameras and remote-controlled locks at all of our 82 schools
- ▶ Armed security officers at secondary schools, some elementary schools.
- ▶ \$834,000 to hire more security resource officers and campus monitors.
- ▶ Speak Out Hotline at 800-423-TIPS (8477) & P3 App
- ▶ Active shooter training and lockdown drills at our schools.
- ▶ In December, BPS formally solicited expert consultants to evaluate school security and prioritize next steps for buildings.

State Security Plan Summary

- ▶ Approved by both Senate & House on Governors Desk Now
 - ▶ Addresses some gun control
 - ▶ Strengthens threat laws
 - ▶ Establishes a safety commission
 - ▶ Creates office of safe schools
 - ▶ Creates Coach Aaron Feis Guardian Program (Optional)
 - ▶ Requires districts to cooperate with law enforcement
- ▶ Approved Funding - \$400M
 - Mental Health - \$69M for DOE
 - School Guardian Program - \$67M for Sheriff Offices
 - Safe Schools Allocation - \$97M
 - Hardening Schools - \$98M
 - DCF Crisis Teams - 18.3M

Sheriff Ivey's 4 Point Proposed Plan

- ▶ Education & Awareness
 - ▶ Staff, Teacher & Students Active Shooter Training
 - ▶ Drills
 - ▶ Speak Out
- ▶ Hardening Schools
 - ▶ Single Point Access
 - ▶ Access Control
 - ▶ Monitored
 - ▶ Locked Doors
- ▶ Increased volume of SROs
 - ▶ Added 7 this year
- ▶ STOMP Plan
 - ▶ Sheriff Trained Onsite Marshall Program
 - ▶ Voluntary
 - ▶ 130 plus hours of training
 - ▶ Annual training

Reasons for Security Updates

- ▶ Increased number of outside threats to school campuses.
 - ▶ According to <https://everytownresearch.org>: Approximately 294 school shootings have occurred since 2013.
- ▶ Decrease possibility of intruders entering campuses through multiple locations.
- ▶ Increased school wide safety and security for all stakeholders.
- ▶ Our students welfare is our #1 priority.

Campus Changes

- ▶ Single Point of Entry- Front Gate
 - ▶ Must check in at the front office to be buzzed in to campus.
 - ▶ Door is locked at 8:00 am and remains locked throughout the school day.
 - ▶ Dismissal- gates opens at 2:20pm to allow anyone with a parent pickup pass to pick up students at the classroom.
 - ▶ Only parents with parent pickup passes are allowed on campus from 7:45 am to 8:00am and from 2:20 pm to 2:30pm.
 - ▶ Parent Passes need to be visible at all times.
 - ▶ Lanyards have been order for Parent Passes.

Front Office Changes

- ▶ Camera/Monitor in Front Office- Captures image of anyone entering front office.
- ▶ All visitors must sign in before getting buzzed on to the campus.

Campus Changes

- ▶ Back Gate- opens at 7:30 for students only.
- ▶ Parents with a parent pass may enter the back gates from 7:45 am to 8:00am and from 2:20pm to 2:30pm.
- ▶ All other times, the back gate is locked.
- ▶ Cameras are located around the perimeter of the campus and are monitored within the school (at real time).

Campus Changes

- ▶ All students who arrive on campus prior to 7:45 am will be directed to the cafeteria, media center or select rooms.
- ▶ Students will be dismissed to their classrooms at 7:45 am.
- ▶ Monitors are at each opened gate to facilitate smooth access to the campus.
- ▶ All afterschool clubs and sponsored activities will deliver students to either the front gate or the car loop for parent pick up.

Lunch Procedures

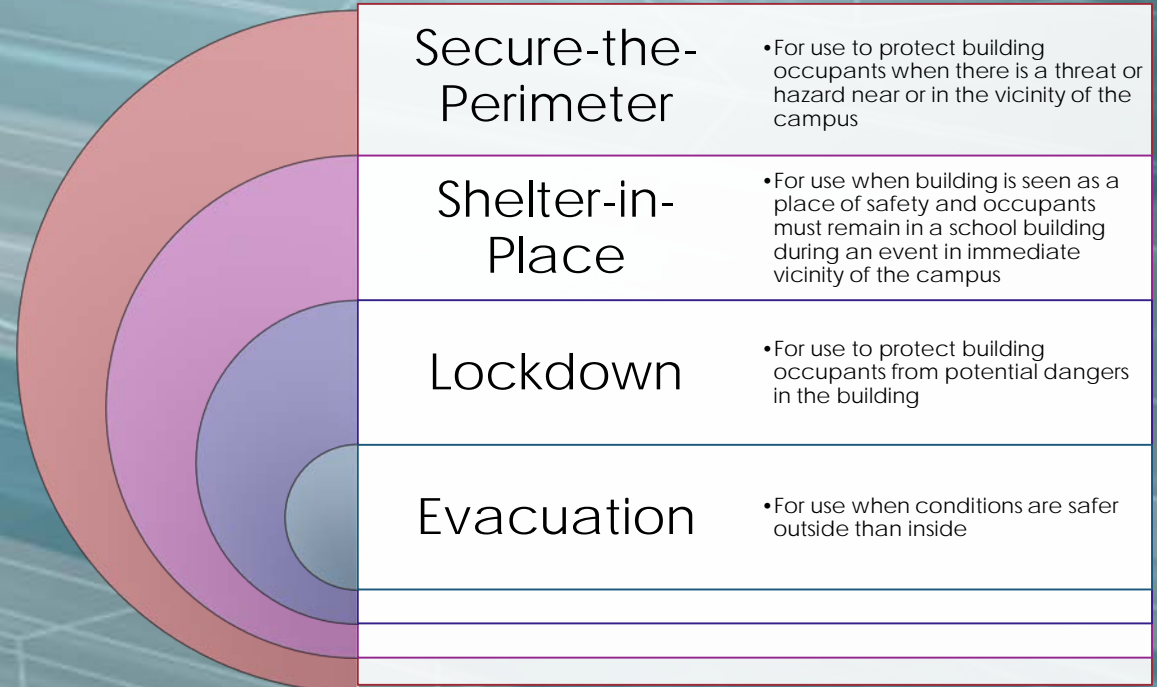
- ▶ Parents need to check in at the front office and receive a visitors pass to have lunch with their student.
- ▶ Parents may sit on the stage or directly outside the cafeteria at the tables with their students. You can not go to the pavilion or tables outside classrooms.
- ▶ You may only have lunch with your student.
- ▶ You must say goodbye to your student at the cafeteria. You can no longer walk them back to class from lunch.

SEOP- School Emergency Operation Plan

- ▶ Every school in the district has a plan developed specifically for their school site.
- ▶ The plan is shared with district and school security along with our local SRO.
- ▶ Staff members with special skills have been identified; ex. First Aid, CPR, AED, Translation, Counseling, Technology.
- ▶ School Crisis Team roles and responsibilities were assigned to specific members of the faculty.
- ▶ All members of the faculty and staff have a role in the facilitation of the plan.

General Emergency Procedures

- ▶ **Secure-the-Perimeter**
 - ▶ Police activity in the area, community emergency
- ▶ **Shelter-in-Place**
 - ▶ Police activity in the immediate area, severe weather, chemical contaminant
- ▶ **Lockdown**
 - ▶ Threat/weapon on campus
- ▶ **Evacuation**
 - ▶ Fire, Gas Leak, Bomb Threat



General Emergency Procedures

- ▶ Indialantic has a safety plan in place for each of the four general emergencies identified on the previous slide.
- ▶ Teachers and students have practiced emergency procedures for the drills.
- ▶ In case of a true emergency please do not come to the campus until you have been instructed to by the school, district, or emergency personnel.

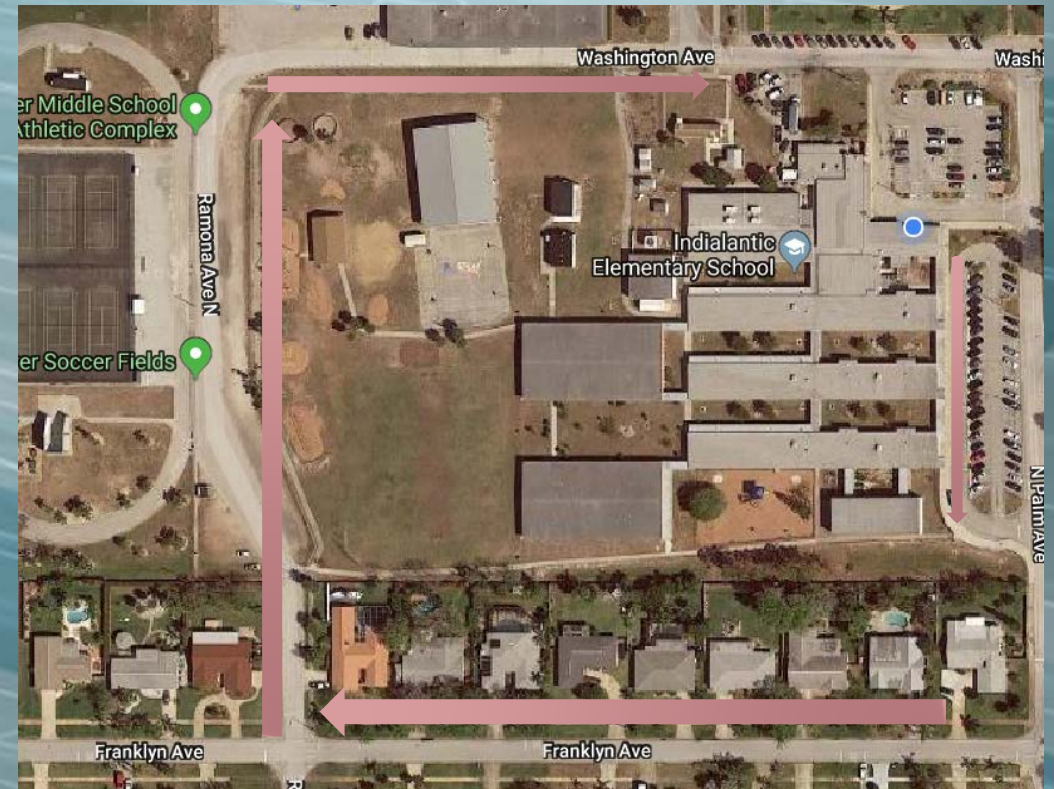
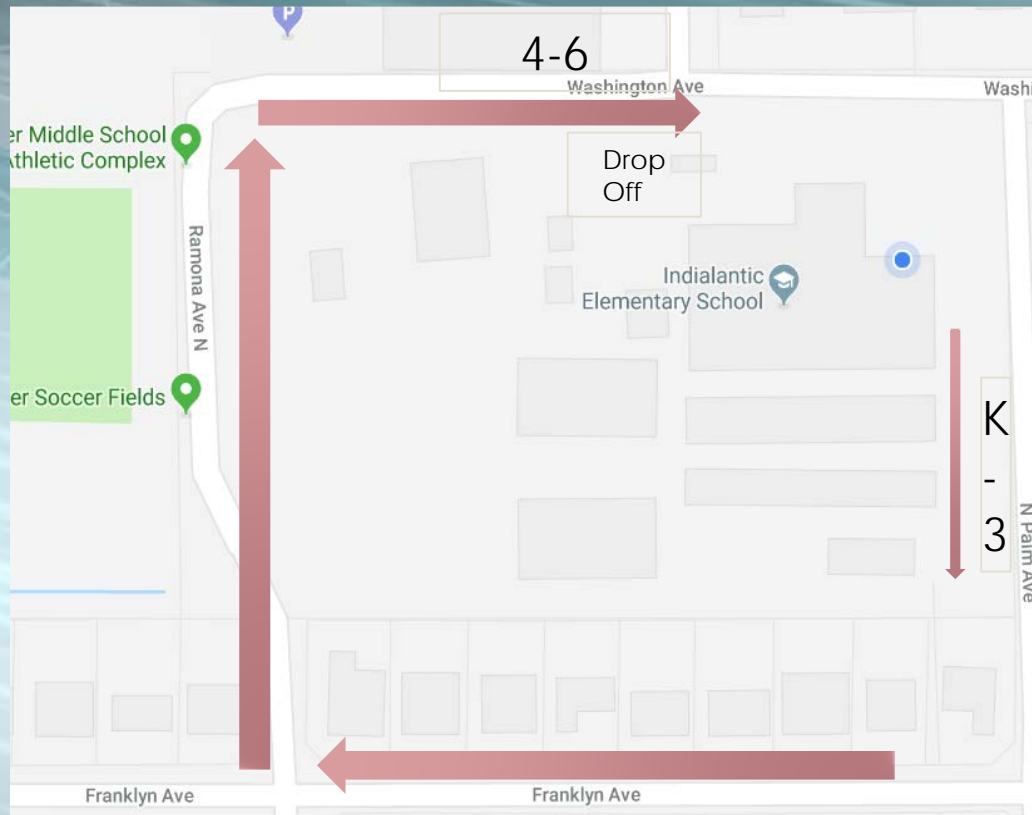
Reunification Process - General Procedures

- ▶ It is imperative that we have up-to-date, accurate cell phone, home phone and email information so that we can contact you in case of an emergency.
- ▶ Reunification may happen on site or at a secure off-site location.
- ▶ There will be three distinct staging areas: A parent Check-in, A Family Waiting Area, and a Student Supervision Area.
- ▶ Identification will be required for the safe release of students to their parent, guardian, or designated emergency contact.

Traffic and Safety Concerns

- ▶ Ideas for next year
- ▶ One way flow of traffic around the back of the school for drop off and pick up. (See map on next slide)
- ▶ Have two separate car loop drop off/pick up areas.
 - ▶ Grades K – 3: Front off school
 - ▶ Grades 4 – 6: Side gate by Hoover
 - ▶ If you have multiple students, you would pick up at the youngest students zone.
 - ▶ We would like to test pilot for 4 weeks at the end of the school year to gather data on effectiveness.

One Way Direction Around The School 18/19



Suggestions from parents

- ▶ Parent badges- temp badges in process
- ▶ Lanyards for badges- on order
- ▶ Area for students with sensory issues- besides cafeteria
- ▶ Single point of entry for everyone-only one gate
- ▶ Photo ID for students, parents, teachers
- ▶ Transparent backpacks
- ▶ No one on campus all day except students and teachers
- ▶ No Drop Off Zone Signs for back area

Concerns from parents

- ▶ Car loop in the back needs to be changed-unsafe
- ▶ The measures are not addressing the problem –makes parents like they are the threat
- ▶ Were experts consulted prior to changes –(yes both District Security and Law Enforcement)
- ▶ Are you working with Hoover on changes- (yes- both Principals have attended security meetings at the district and with BCSO.

Thank You For Your Support

- ▶ We appreciate your parental support with the changes being made to enhance security for our students and faculty.
- ▶ We know that changes are difficult, but we must maintain the best possible outlook for students emotional and educational wellbeing.
- ▶ Please provide any concerns or suggestions that you may have to enhance our efforts on the yellow sheets provided on the table.